



The Lakeland Trial

Lower Lorton, Cumbria

Saturday 11th November 2023



Photo: M Griffin

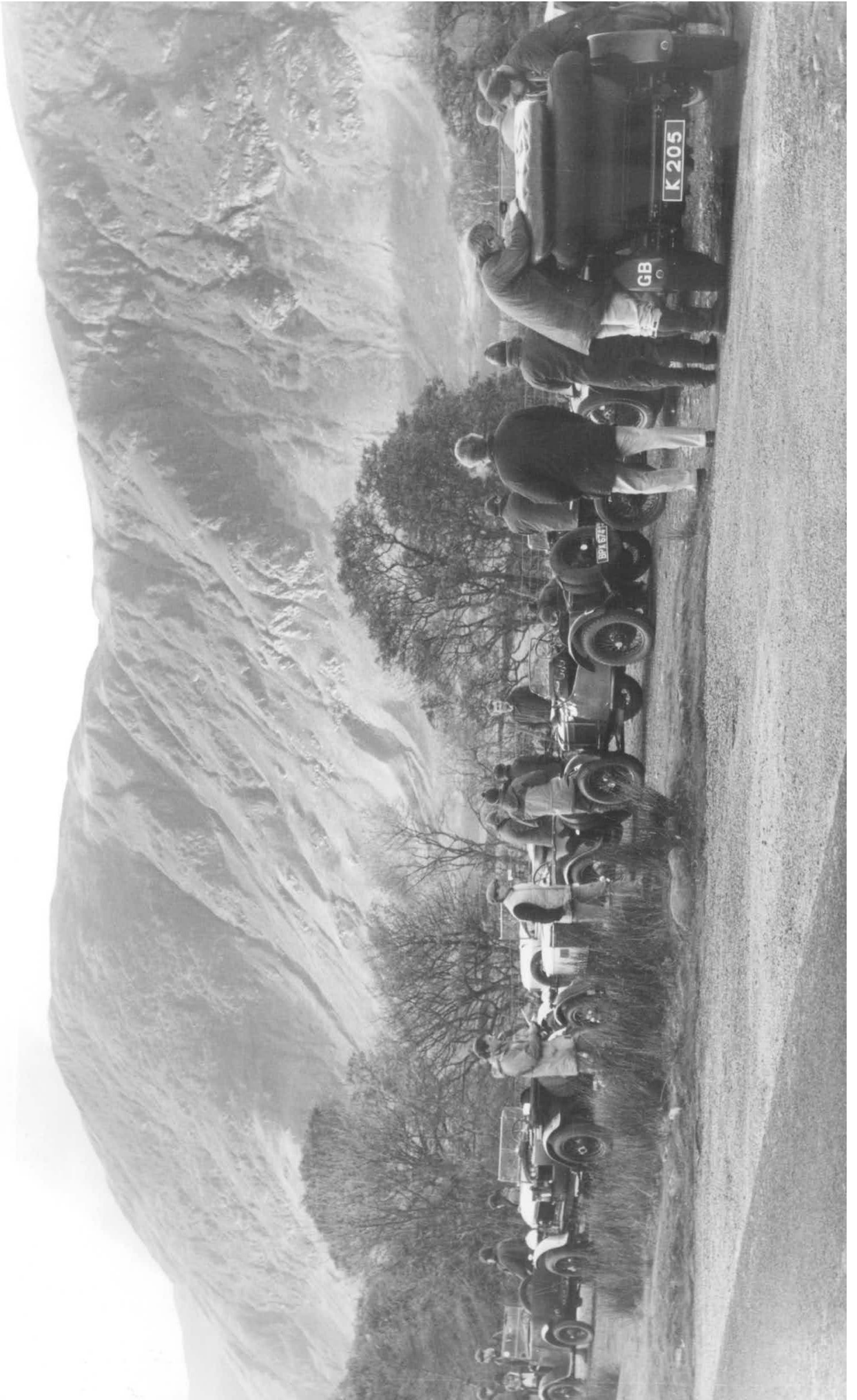
Spectator Information

The Vintage Sports-Car Club is proud to be associated with our Principal Associates, Partners and Award Sponsors

Bonhams | Cars



HAGERTY
CLASSIC CAR INSURANCE





THE VINTAGE SPORTS-CAR CLUB

The Lakeland Trial

Saturday 11th November 2023

Motorsport UK Permit Number - 132674

SPECTATOR INFORMATION

Held under the General Regulations of Motorsport UK (incorporating the provisions of the International Sporting Code of the FIA) and the Supplementary Regulations

SPECTATOR HILL

Please remember Trials are not really spectator events. Many hills are unsuitable for public access and only the hill listed below is available for public viewing. If visiting the hill please remember to park responsibly, respect the landowner's property and follow any instructions given by a Marshal.

DRUMHOUSE	LOCATION
<p>Drumhouse, Honister Slate Mine</p> <p>Open 0900hrs to 1530hrs.</p> <p>Parking, toilets, & refreshments are all available at Honister Slate Mine at the top of Honister Pass. Note there is a parking charge.</p> <p>The start of the hill is a short walk from the car park.</p> <p>Please note that the track is very steep and rough especially at the hairpin bends.</p>	<p>Entry map reference OS Sheet 89 224136</p> <p><i>Venue used since the first Lakeland Trial.</i></p>

THERE ARE NO OTHER DESIGNATED SPECTATOR HILLS ON THE LAKELAND TRIAL

WHAT IS A CAR TRIAL?

In the early days of the motor car trialling was the main form of motor sport in the United Kingdom. There was only one racing circuit in the country, Brooklands, and rallying had not started. These climbs up rocky, muddy hills were extremely popular in their day and as with all forms of motor sport helped in the development of the car.

A Car Trial is an untimed form of motor sport, where competitors attempt to climb a number of set routes up steep, rough and muddy hills. The route up each hill is known as a "Section". Each Competitor will receive a score between 0 and 25 for each Section depending on how far they travel up the hill. All the scores for each Section are combined at the end of the event, and the Competitor with the highest combined score wins.

Competitors must carry passengers, who are called 'Bouncers'. The role of the Bouncer is to navigate the driver between sections on the forest roads and public highway, and bounce within the confines of the car when they are on a Section. Bouncing can give the car more grip, thus helping it to travel further up the hill and score more points.

You will notice Marshals standing alongside the Sections. Marshals observe the score for each car, whether it hits a marker, and writes this onto the Competitors' Scorecard. The Marshals are also responsible for ensuring the event runs safely so please do as they ask. Trialling is a fun form of motor sport, very social and hugely successful within the VSCC. The Club runs a number of Car Trials each year throughout the UK, with the Lakeland Trial having taken place in this area since 1969.

Entry List

No	Class	Driver	Car	ccS	Reg No.	Year		Start Hill
101	1a	Leston (Ollie) O.	AUSTIN 7 CHUMMY	749	LAS 905	1928	Std	3. Routenbeck Rise
102	1a	Daniell (George) Mr G.	AUSTIN 7 CHUMMY	750	RU 5002	1927	Std	5. Nanny's Peep
104	1a	Rushton (David) D.J.	MG M TYPE	847	PJ 7970	1932	Std	3. Routenbeck Rise
106	1a	Bruce (Tobias) T.	SINGER 9 SPORTS 4-SEATER 'B	972	APW 971	1936	Std	6. Sale Fell
107	1a	Blake (Matthew) M.J.	GN VITESSE 2 STR	1086	BY 5115	1922	Std	4. No 17
108	1a	Marsh (Hester) H.A.	AUSTIN 7 CHUMMY	747	LG 153	1928	Std	8. Broomfell
109	1a	Owen (Sarah) S.	AUSTIN 7 CHUMMY	747	DG 210	1930	Std	1. Drumhouse
110	1b	Baxter (Harry) Mr H.J.	RILEY 9 SPECIAL	1100	OF 3245	1929	Spl	8. Broomfell
111	1b	Adams (Thomas) T.	AUSTIN 7	747	JK 782	1929	Mod	7. Spout Force
112	1b	Mycock (Hannah) Miss H.	AUSTIN 7	747	TY 7519	1930	Mod	1. Drumhouse
113	1b	Ireland (Toby) T.W.	RILEY 9 SPECIAL	3300	BF 5806	1930	Mod	1. Drumhouse
115	1b	Dutton (Ivan) I.J.	SALMSON VAL 3	1087	BF 9703	1923	Spl	5. Nanny's Peep
116	1b	Carr (Gillian) Miss G.M.	AUSTIN 7 CHUMMY	747	6308 FN	1930	Mod	8. Broomfell
117	1b	Nicholson (Dave) D.	AUSTIN 7 SPECIAL	747	NSV 534	1937	Spl	12. Derwent View
118	1b	Brown (Robert) R.H.	AUSTIN 7 ULSTER REPLICA	747	BF 5908	1926/30	Spl	1. Drumhouse
119	1b	Chatto (Derek) D.V.C.	MG M TYPE	847	MG 1930	1929/30	Mod	1. Drumhouse
130	1b	Hughes (Noel) N.T.	AUSTIN 7 ULSTER	747	SV 7627	1930	Mod	1. Drumhouse
131	1b	Baxter (Mary) M.L.K.	AUSTIN ULSTER REP	750	BF 6188	1930	Mod	8. Broomfell
132	1b	Craven (Benjamin) B.	AUSTIN 7	747	BTJ 600	1937	Spl	9. Graystones
133	1b	Williams (Christopher) C.A.	RILEY SPECIAL	1500	JV 285	1930/34	Spl	6. Sale Fell
134	1b	Johnson (Angus) A.M.	AUSTIN 7 ULSTER REPLICA	747	GC 2799	1930	Mod	1. Drumhouse
135	1b	Parkinson (Philip) P.	AUSTIN SEVEN AE TOURER	747	DR 7354	1930	Std	11. Darling How
136	1b	Painter (James) J.F.	AUSTIN 7 ULSTER REPLICA	750	NSU 852	1930	Mod	5. Nanny's Peep
137	1b	Need (Chris) C.	RILEY 9	1100	SV 6484	1930	Spl	1. Drumhouse
138	1b	Moore (Matthew) M.R.	AUSTIN 7 CHUMMY	696	SV 4474	1929	Std	5. Nanny's Peep
139	1b	Storer (Andy) A.R.	AUSTIN 7	770	OX 8346	1928	Spl	1. Drumhouse
140	1b	Maitland (Antony) A.A.A.	AUSTIN 7	750	OG 5815	1930	Spl	1. Drumhouse
141	1b	Craven (Andrew) A.T.	AUSTIN 7 SPECIAL	747	FV 4763	1934	Spl	9. Graystones
142	1b	Mycock (Kraig) K.T.	AUSTIN 7 ULSTER	858	SV 5698	1930	Mod	1. Drumhouse
144	1b	Walby (Peter) A.P.	BUGATTI BRESCIA	1500	XW 6521	1924	Mod	3. Routenbeck Rise
145	1b	Read (David) D.W.	AUSTIN 7 SPECIAL	747	TVS 792	1937	Spl	10. Aiken Beck
146	1b	Quartermaine (Jamie) J.A.	AUSTIN 7 GORDON ENGLAND CUP	795	WH 587	1928	Mod	11. Darling How
147	1b	Emson (James) J.	SINGER JUNIOR	848	UU 3625	1930	Mod	5. Nanny's Peep
149	1b	Bond (Jack) J.S.	AUSTIN 7 CHUMMY	750	VR 8046	1930	Mod	8. Broomfell
150	1b	Mellors (Ben) B.J.	PEUGEOT 190S/HARLEY DAVIDSON	1200	BF 4269	1929/30	Spl	12. Derwent View
151	1b	Martin (Charlie) C.	AUSTIN 7 ULSTER	747	RF 5271	1929	Mod	8. Broomfell
152	1b	Hoskins (Harry) H.M.	AUSTIN 7 TOURER	747	GH 6536	1929/30	Mod	6. Sale Fell

153	1b		White (Gaynor) Mrs G.	AUSTIN 7 SPECIAL	747	KGK 99	1929	Spl	3. Routenbeck Rise
154	1b		Bullett (Archie) A.T.B.	AUSTIN 7 ULSTER 2STR	747	OG 9262	1930/31	Spl	8. Broomfell
156	1b		Gordon (Malcolm) M.	AUSTIN 7 CHUMMY	747	GC 411	1929	Mod	1. Drumhouse
157	1b		Read (Andrew) A.J.W.	RILEY 9 TOURER SPECIAL	1087	MY 5481	1930	Spl	10. Aiken Beck
158	1b		Brown (Derek) D.J.	AUSTIN 7	750	HY 1630	1931	Spl	5. Nanny's Peep
159	1b		Marsh (William) W.	AUSTIN 7 ULSTER	747	JO 8957	1929	Mod	8. Broomfell
160	1b		Rolfe (David) D.R.	MG M TYPE	1087	VU 7908	1930	Spl	1. Drumhouse
161	1b		Craven (Matthew) M.J.	AUSTIN 7	747	YVL 916	1935	Spl	4. No 17
163	1b		Longhurst (Philip) P.C.	RILEY 9 SPECIAL	1087	BPX 674	1929	Spl	1. Drumhouse
164	1b		Collings (Archie) A.N.	AUSTIN 7 ULSTER REPLICA	747	RAS 193	1930	Mod	4. No 17
165	1b		Knight (David) D.R.	AUSTIN 7 CHUMMY	747	USJ 648	1930	Mod	1. Drumhouse
166	1b		Milne-Taylor (Philip) P.J.	AJS 2 SEATER SPORTS	1056	UK 9533	1930	Spl	3. Routenbeck Rise
168	1b		Jeavons (Vienna) Miss V.F.	AUSTIN ULSTER	747	VL 8550	1932	Mod	13. Barkhouse
169	1b		Agnew (David) D.	AUSTIN 7	747	BF 8791	1928	Spl	1. Drumhouse
170	1b		Williams (Rachael) Dr R.	AUSTIN 7	747	BF 5206	1930	Spl	6. Sale Fell
171	1b		Hindle (Charlie) C.R.	AUSTIN 7 SPORTS	747	HSU 310	1934	Spl	9. Graystones
172	1b		Groves (Mark) M.	SALMSON GN	1100	BF 8438	1921	tba	4. No 17
173	1b		Welch (Sebastian) R.S.	AUSTIN 7 CHUMMY	747	PN 6583	1930	Mod	7. Spout Force
175	1c		Batty (Peter) Mr P.J.	FORD T	3300	BF 7838	1929	Spl	1. Drumhouse
177	1c		Skelton (Sarah) Miss S.	AUSTIN 7 ULSTER (COPY)	747	AZ 6079	1930	Mod	4. No 17
178	1c		Price (Matt) M.E.	FORD MODEL A SPECIAL	3300	BF 8349	1930	Spl	1. Drumhouse
179	1c		Bingham (Dennis) D.	RILEY 12/4 SPECIAL	1496	DHX 882	1936	Spl	1. Drumhouse
180	1c		Blake (Rachel) Mrs R.	AUSTIN 7 ULSTER REPLICA	747	BF 8724	1929	Spl	1. Drumhouse
181	1c		Price (Simon) S.E.	FORD MODEL A SPECIAL	3300	BF 4957	1930	Spl	1. Drumhouse
182	1c		Arkell (Stephen) S.	SINGER JUNIOR	848	VP 6379	1929/30	Spl	1. Drumhouse
183	1c		Pittaway (Duncan) D.M.	GN ANZANI	3200	EP 3714	1921/28	Spl	4. No 17
184	1c		Harrison (Jolyon) J.L.	FORD A SPECIAL	3200	SL 9782	1930	Spl	1. Drumhouse
185	1c		Johnson (Andy) M.A.	BUGATTI T13	1498	DL 4853	1924	Mod	1. Drumhouse
186	1c		Rich (Stewart) S.	AUSTIN 7	747	SV 6155	1930	Spl	1. Drumhouse
187	1c		Mellor (Jonathan) W.J.	AUSTIN 7	747	SV 5877	1930	Mod	1. Drumhouse
188	1c		Webb (Ian) I.D.	AUSTIN ULSTER REPLICA	747	VC 9452	1930	Mod	1. Drumhouse
189	1c		Bruce (Aleck) Mr	AUSTIN 7 CHUMMY	747	UK 6181	1928	Std	1. Drumhouse
190	1c		Dobinson (Keith) K.	AUSTIN 7	747	OG 1189	1930	Mod	1. Drumhouse
191	1c		Waite (Fred) F.	AUSTIN 7	747	BF 5883	1930	Spl	1. Drumhouse
192	1c		Kite (Peter) P.	GN SPORTS	1201	BF 5987	1921	Spl	1. Drumhouse
193	1c		Fox (Andrew) A.G.	AUSTIN 7 SPECIAL	747	BPW 537	1937	Spl	1. Drumhouse
194	1c		Thompson (Bob) E.R.	AUSTIN 7 CHUMMY	747	UC 6319	1928	Mod	1. Drumhouse
195	1c		Golightly (David) D.K.						1. Drumhouse
196	1c		Houlgate (Richard) C.R.J.	AUSTIN 7	747	RX 2937	1930	Spl	1. Drumhouse
197	1c		McVicker (William) W.D.	AUSTIN 7 CHUMMY	747	PH 2185	1927/32	Mod	1. Drumhouse
198	1c		Skelton (Donald) D.	AUSTIN 7 SPORTS	750	WFO 423	1930	Spl	1. Drumhouse

199	1c		Bee (Alan) A.	AUSTIN 7 CHUMMY	747	PM 6722	1926	Mod	1. Drumhouse
200	2a		Hunter (Chris) Mr C.	FORD MODEL A	3300	954 YUT	1930	Std	10. Aiken Beck
201	2a		Crook (Christopher) C.R.A.	FORD MODEL A	3285	BF 5664	1930	Std	11. Darling How
202	2a		Batty (Christopher) C.J.	FORD PHAETON 35 A TOURER	3285	BF 5614	1928	Std	1. Drumhouse
203	2a		Williams (Edward) E.	BENTLEY 3 LITRE TOURER	3000	YM 8596	1926	Std	11. Darling How
204	2a		Harrold (James) J.A.	FORD MODEL A	3300	RSY 916	1930	Std	10. Aiken Beck
205	2a		Birkett (Matthew) M.R.	FORD MODEL A	3300	BF 7535	1929	Std	12. Derwent View
206	2a		Boulton (Dominic) Mr D.	FORD MODEL A PHAETON	3286	BF6272	1928	Std	13. Barkhouse
207	2a		Wiseman (John) J.C.	FORD MODEL A	3300	NRV 505H	1930	Std	10. Aiken Beck
208	2a		Cawley (Dougal) D.	FORD MODEL A	3300	510 UXN	1930	Std	12. Derwent View
209	2a		Littlewood (Alistair) A.M.	FORD MODEL A	3300	FG 8317	1930	Std	7. Spout Force
220	2b		Saxl (David) D.	RILEY 12/4 SPECIAL	1496	9001 OW	1934/36	Spl	12. Derwent View
221	2b		Longden (Stephen) S.C.W.	FORD A SPEEDSTER	3300	XV 1845	1928	Mod	11. Darling How
222	2b		Beebee (Robert) R.T.	CHRYSLER B70 TOURER	3500	599 XUW	1925	Mod	13. Barkhouse
224	2b		Hodgkinson (James) J.E.S.	FORD MODEL A	3300	DS 7898	1929	Mod	11. Darling How
225	2b		White (Joanne) Miss J.L.	RILEY 12/4 SPECIAL	1496	PSY 796	1933	Spl	12. Derwent View
226	2b		Wright (Andrew) A.	CHRYSLER 75	4078	RU 9935	1929	Spl	7. Spout Force
227	2b		Power (Michael) M.R.P.	VAUXHALL 23-60	4400	YJ 6820	1923	Spl	13. Barkhouse
228	2b		Bowyer (Simon) S.I.	FORD MODEL A	3300	ANZ 2917	1930	Spl	13. Barkhouse
229	2b		Bowyer (Charlotte) Miss C.	FORD MODEL A	3300	DS 8920	1928	Spl	13. Barkhouse
230	2b		Jeavons (Paul) P.R.	VAUXHALL 30-98 TOURER	4500	UX 2952	1924	Mod	13. Barkhouse
231	2b		Higgs (John) J.	MORRIS COWLEY	1802	TE 6974	1929	Spl	9. Graystones
232	2b		Whitaker (Benjamin) B.A.	FORD MODEL A	3285	BF 525I	1929	Mod	12. Derwent View
234	2b		Hindle (Julian) J.C.	FORD MODEL A PHAETON	3300	BF 4911	1929	Mod	9. Graystones
235	2b		Cawley (Wilfred) W.A.F.	FORD MODEL A	3300	IA 7667	1928	Mod	12. Derwent View
236	2b		New (Michael) M.R.	MORRIS OXFORD SPECIAL	1802	BS 9708	1928	Spl	12. Derwent View
238	2b		Miller (Archie) A.C.M.	CHRYSLER 66	3582	FM 6024	1930	Mod	10. Aiken Beck
239	2b		Bond (David) D.J.	MORRIS COWLEY 2 STR	1550	RW 4974	1926	Mod	8. Broomfell
240	2b		Stollery (Joseph) J.A.	RILEY 9 MK3	3300	UL 7459	1929/30	Spl	7. Spout Force
241	2b		Holden (Jeremy) J.G.	VAUXHALL A TYPE	4500	SV 5692	1914/20	Spl	13. Barkhouse
243	2b		Hill (Stephen) S.	FORD MODEL A	3400	BF 5704	1928	Mod	7. Spout Force
244	2b		Waterfield (Tom) T.W.	FORD MODEL A	3284	DS 8852	1927/28	Mod	12. Derwent View
245	2b		Blakeney-Edwards (Patrick) P.B.	INVICTA A TYPE	4500	UK 9428	1930	Mod	6. Sale Fell
143	1b	R1	Sellars (Grant) G.W.M.	AUSTIN 7	747	COG 968	1936	Spl	3. Routenbeck Rise
148	1b	R2	Wiltshire (George) Mr G.H.W.	AUSTIN 7 CHUMMY	747	BF 5308	1930	Mod	7. Spout Force
162	1b	R3	Kibble (Matthew) M.	AUSTIN 7	747	MY 3417	1930	Spl	3. Routenbeck Rise

To help the event run smoothly and safely the Marshals will blow a whistle to signal a car is ascending or descending the hill. When you hear a whistle please stand to the side.....this is for your own safety.



We hope you enjoyed watching the old cars climbing Drumhouse – part of our *Motoring Heritage*.

To find out more about the Vintage Sports-Car Club and our membership offers see www.vsccl.co.uk

The Club extends its thanks to:

The Forestry Commission, Honister Slate Mine and other private landowners.

The Principal Associates of the Club:

Bonhams, Hagerty and Wriggly Monkey



